



# INDUSTRIAL BUILDING FOR SALE

1830 CARGO COURT :: LOUISVILLE, KENTUCKY



## FEATURES:

*Convenient location in  
Bluegrass Industrial Park  
Immediate Availability*

- ⌘ Approximately 16,693+/- square foot building
- ⌘ Additional office/warehouse building available
- ⌘ 4.15+/- Acres total
- ⌘ One (1) Drive-in door
- ⌘ Two (2) dock high doors with levelers
- ⌘ PEC zoning

**FOR MORE INFORMATION PLEASE CONTACT**  
**Kevin A. Grove**  
Sr. Vice President/Partner  
502.412.7615  
kgrove@cbrelouisville.com

**Doug Butcher**  
Vice President  
502.412.7641  
dbutcher@cbrelouisville.com

**Eric St. John**  
Senior Associate  
502.412.7607  
estjohn@cbrelouisville.com

**Scott Gilmore**  
Associate  
502.412.7639  
sgilmore@cbrelouisville.com

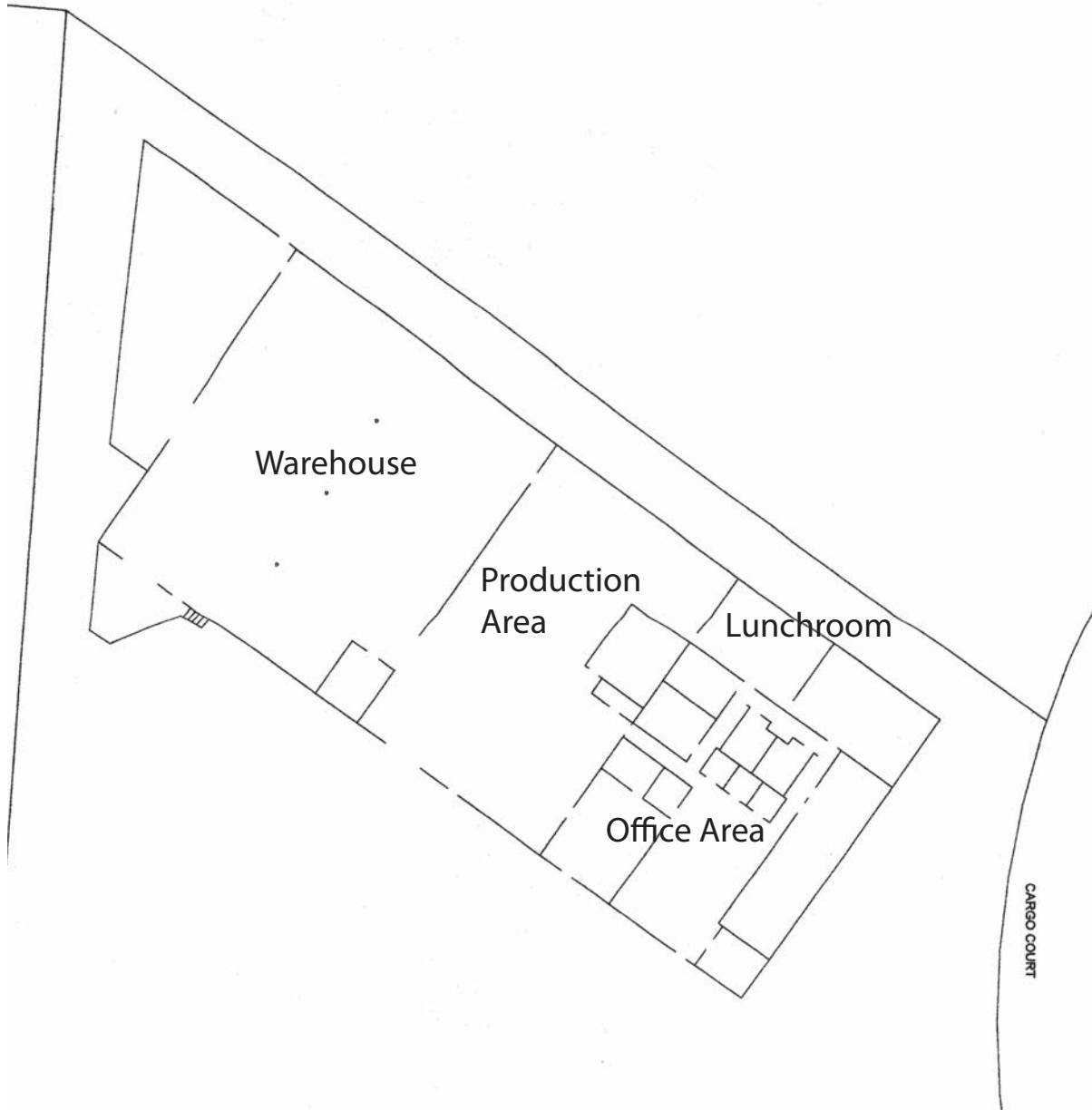
CB Richard Ellis | Louisville | 6060 Dutchmans Lane | Suite 100 | Louisville, KY 40205





# INDUSTRIAL BUILDING FOR SALE

1830 CARGO COURT :: LOUISVILLE, KENTUCKY



For additional information, please visit our website: [www.cbrelouisville.com](http://www.cbrelouisville.com)

© 2009 CB Richard Ellis, Inc. This information has been obtained from sources believed reliable. We have not verified it and make no guarantee, warranty or representation about it. Any projections, opinions, assumptions or estimates used are for example only and do not represent the current or future performance of the property. You and your advisors should conduct a careful, independent investigation of the property to determine to your satisfaction the suitability of the property for your needs.

**CBRE** | Louisville  
CB RICHARD ELLIS